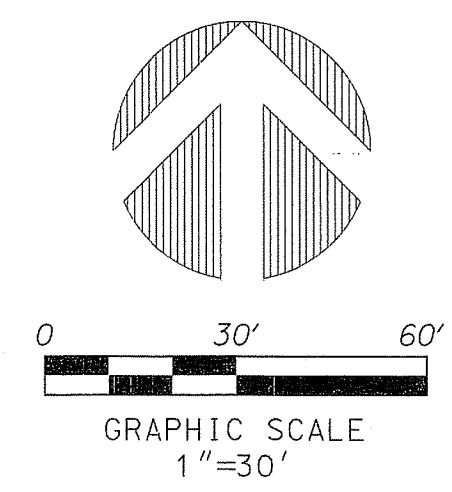


PERIMETER
 SURVEYING & MAPPING
 Prepared by: Jeff S. Hodapp, P.S.M.
 Certificate of Authorization No. LB7264
 947 Clint Moore Road
 Boca Raton, Florida 33487
 Tel: (561) 241-9988
 Fax: (561) 241-5182

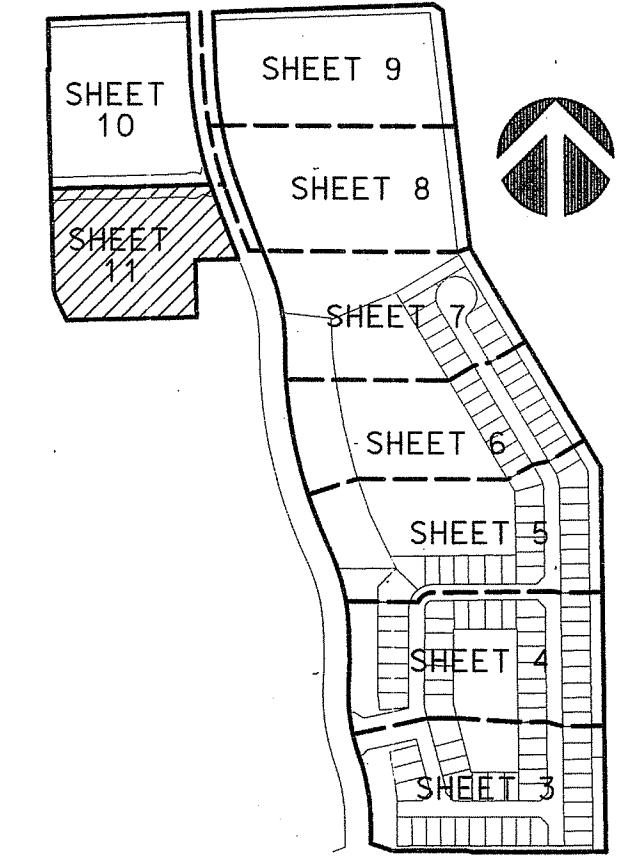
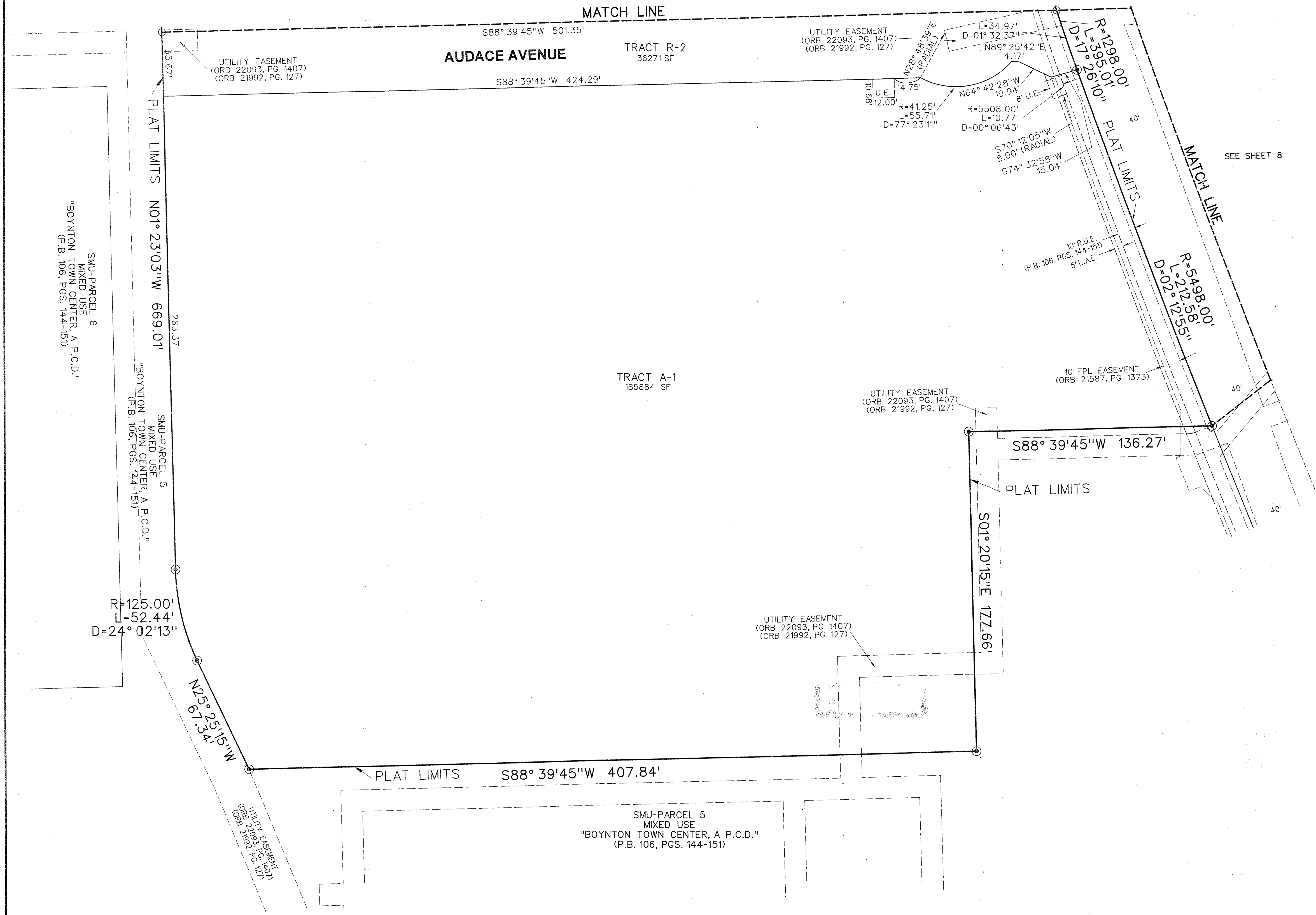
CORTINA PUD REPLAT TWO

A REPLAT OF ALL OF "CORTINA PUD REPLAT" (P.B. 109, PGS. 196-202, P.B.C.R.) AND PORTIONS
 OF "BOYNTON TOWN CENTER, A P.C.D." (P.B. 106, PGS. 144-151, P.B.C.R.)
 SECTION 20, TOWNSHIP 45 SOUTH, RANGE 43 EAST
 CITY OF BOYNTON BEACH, PALM BEACH COUNTY, FLORIDA.
 FEBRUARY, 2016

90



SEE SHEET 10



KEY MAP
NOT TO SCALE

SHEET 11 OF 11

LEGEND:

- SET P.R.M. (UNLESS OTHERWISE NOTED)-4" x 4" CONC. MON. WITH ALUMINUM DISK STAMPED *LB7264
- ⊙ P.C.P. CENTERLINE

ABBREVIATIONS:

- AC. ACRES
- CH. CHORD
- CHB. CHORD BEARING
- CONC. CONCRETE
- COR. CORNER
- D. DELTA (CENTRAL ANGLE)
- D.E. DRAINAGE EASEMENT
- L. ARCLength
- L.A.E. LIMITED ACCESS EASEMENT
- L.B. LICENSED BUSINESS
- L.B.E. LANDSCAPE BUFFER EASEMENT
- L.M.E. LAKE MAINTENANCE EASEMENT
- L.S. LICENSED SURVEYOR
- L.S.E. LIFT STATION EASEMENT
- L.W.D.D. LAKE WORTH DRAINAGE DISTRICT
- MON. MONUMENT
- O.R.B. OFFICIAL RECORDS BOOK
- N.R. NON-RADIAL
- P.B. PLAT BOOK
- P.B.C.R. PALM BEACH COUNTY RECORDS
- P.G. PAGE
- P.C.P. PERMANENT CONTROL POINT
- P.O.B. POINT OF BEGINNING
- P.O.C. POINT OF COMMENCEMENT
- P.R.M. PERMANENT REFERENCE MONUMENT
- P.S.M. PROFESSIONAL SURVEYOR & MAPPER
- P.U.D. PLANNED UNIT DEVELOPMENT
- R. RADIUS
- R/W. RIGHT-OF-WAY
- R.U.E. ROAD AND UTILITY EASEMENT
- SEC. SECTION
- S.F. SQUARE FEET
- U.E. UTILITY EASEMENT